

# WITMAG

## SPECIFICATION FOR APPROVAL

CUSTOMER \_\_\_\_\_

CUSTOMER'S PART NO. \_\_\_\_\_

DESCRIPTION RJ45 ICM(10/100M Base-T 1port)

WITMAG'S PART NO. RJ-101S03A REV. A

WITMAG'S OLD P/N \_\_\_\_\_

ISSUE NO. \_\_\_\_\_

ISSUE DATE. JUN.3,2019

APPROVED

REJECTED

APPROVED UNDER  
THE CONDITIONS:

Shenzhen Witmag Electronics Co.,ltd

Add:5th Floor,B4 Buliding, Huafeng Guantian Science Park, Shiyan Street,  
Baoan District, Shenzhen City

Tel: +86 755-36921672/36921673

FAX:+86 755-29454863

E-mail:sales@witmag.com.cn

Web:Http://www.witmag.com.cn

Http://www.witmag.cn

### Note:

1. This specification is the proprietary of Shenzhen witmag Electronics Co.,ltd and is not allowed to be revealed to third party without any written approval.
2. This specification is valid within 1 year before approval, and for any updated specification information required, please contact with Witmag's sales window before order releases.



# WITMAG

## SPECIFICATION FOR APPROVAL

CUSTOMER PART NO:

WITMAG PART NO:RJ-101S03A

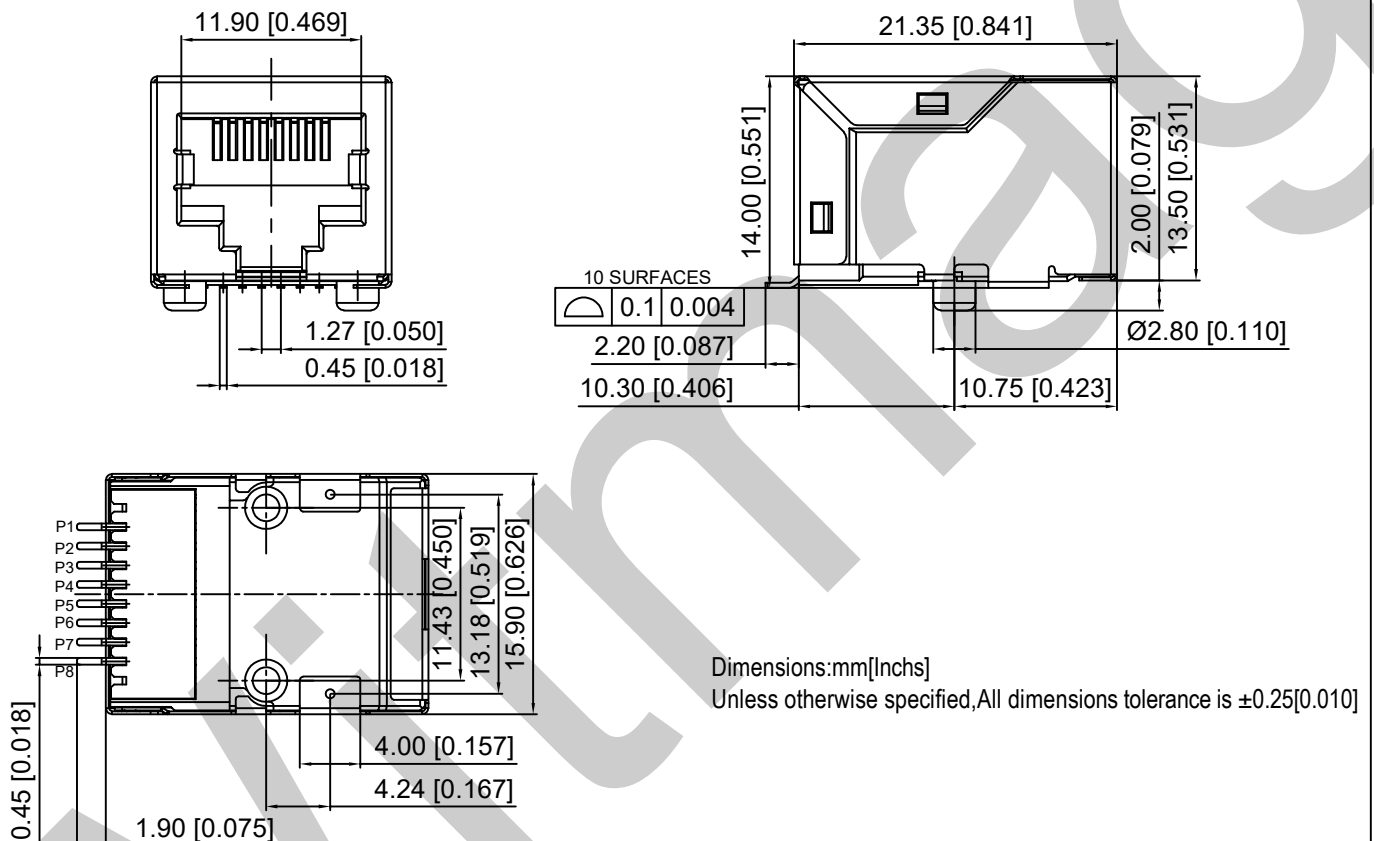
PART NAME:RJ45 ICM(10/100M Base-T 1port)

Rev.:A



### Mechanical Dimension and Notes

#### ◆ Mechanical Dimension



#### ◆ Note:

1. Connector material:  
Housing:Thermoplastic UL94 V-0  
Shield:Brass  
Shield plating:Nickel  
Contact:Cooper alloy  
Contact plating:selective gold,6 micro-inchs min in contact area
2. RJ45 cavities conform to FCC rules regulation part 68
3. The part is recommended for wave soldering process peak soldering temperatures is 260°C max, 5 secs max
4. Operating Temperature:0°C to +70°C
5. Storage Temperature:-40°C to +85°C

# WITMAG

## SPECIFICATION FOR APPROVAL

CUSTOMER PART NO:

WITMAG PART NO:RJ-101S03A

PART NAME:RJ45 ICM(10/100M Base-T 1port)

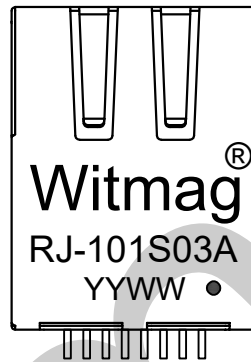
Rev.:A



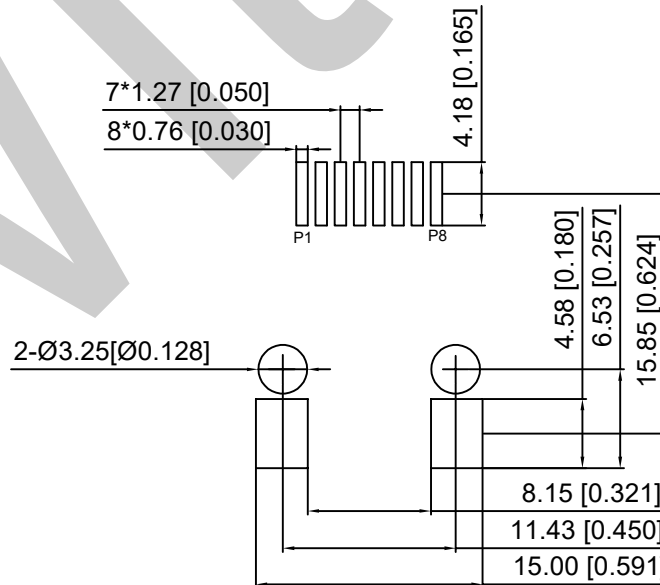
### Labe and PWB Layout

#### ◆ Labe

Plug In Side



#### ◆ PWB Layout



Dimensions:mm[Inchs]

Unless otherwise specified,All dimensions tolerance is  $\pm 0.25$ [0.010]

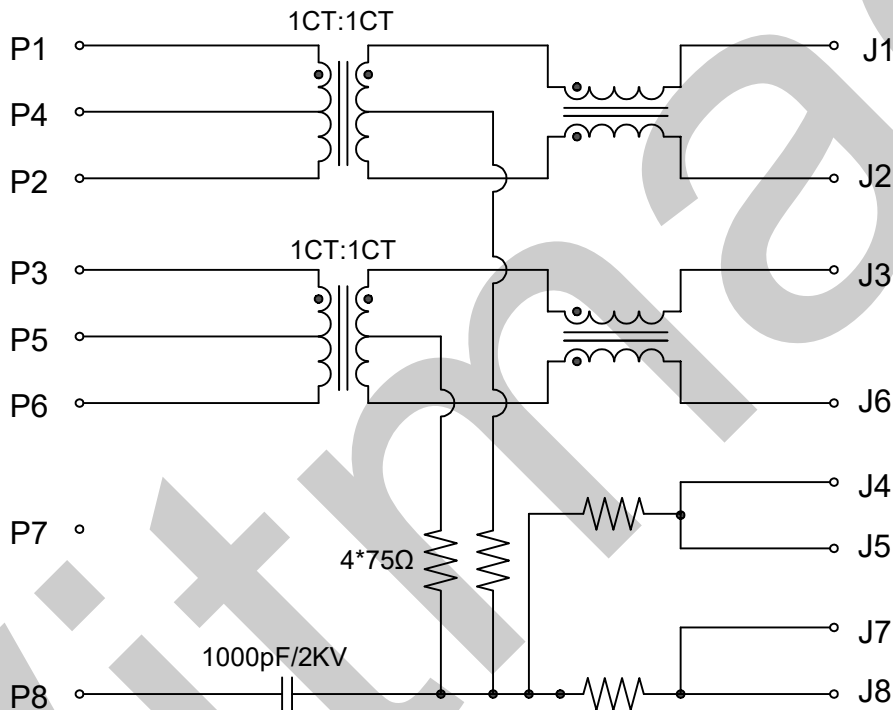
# WITMAG

## SPECIFICATION FOR APPROVAL

<b>CUSTOMER PART NO:</b> <b>WITMAG PART NO:RJ-101S03A</b> <b>PART NAME:RJ45 ICM(10/100M Base-T 1port)</b>	Rev.:A
	 <b>ROHS</b>

### Circuit Schematic and Electrical Specifications

#### ◆ Circuit Schematic



#### ◆ Electrical Specifications

Turn Ratio	TX:RX=1:1±5%		
Primary Inductance (100KHz 0.1V 8mA DC Bias)	350μH MIN		
DC Resistance	1.5Ω MAX		
Insertion Loss	1-100MHz		
	-1.2 dB MAX		
Return Loss (100Ω±15Ω)	1-30MHz	30-60MHz	60-80MHz
	-14 dB MIN	-12 dB MIN	-10 dB MIN
Cross talk	1-100MHz		
	-30 dB MIN		
Common Mode Rejection	1-100MHz		
	-30 dB MIN		
Isolation Voltage (Input to Output)	1800VDC @1mA for 2 sec		